

QUICK START GUIDE

1. It is recommended that the battery be recharged to 100% before use. Plug in the AC adapter into the charger port.
2. Take the protective cap off from the air intake port.
3. Take the Respirable Dust Impactor Assembly off and apply impactor oil, as illustrated on Page 1, *Steps 2.1-2.5*. Use this procedure to clean and replenish the impactor's oil after each 12 to 24 hours of operation, depending on dust concentration.
4. If a gravimetric test is to be performed and a sampling filter is not pre-installed from the factory, install a sampling filter. I.e. **25mm PTFE filter with 2 µm pore size**, or **25 mm PVC filter with 5 µm pore size**. See Page 2, *Step 3.1 – 3.12*. Otherwise, proceed to step 5.
5. Power on the DustCount by pressing the On/Off button along the side of the unit. Pressing On/Off button once when the unit is powered on will mute/un-mute alarms. Holding down the power button for a few seconds will power it off.
6. Install the User Interface, from the USB drive, by double-clicking DustCount-1.0.11.exe (Windows) or DustCount-1.0.11.dmg (MACs). Follow prompts on the PC.
7. Connect the DustCount to the PC by connected a USB 2.0 cable into the USB port on the side of the unit; or via Bluetooth by turning your PC's Bluetooth ON, and pairing with **DUSTCOUNT4xx**. Click YES, if prompted with a code.
8. Launch the User Interface. Click button. Once connected, **SN4xx** or **SN4xx (Bluetooth)** shall be populated in the drop-down Device menu.
9. Scroll to the bottom of the User Interface, click in User Settings tab, to update the DustCount 8899 with your computer's date and time.

NOTES FOR MANAGING LOGS

- Turn off logging before clearing any existing logs, so you know what has and has not been cleared.
- Clear logs on a regular basis after they have been downloaded to a PC. Allowing unused logs to accumulate in the DustCount may slow downloading, particularly the Read All Logs command.



Locating DustCount 8899 Parts



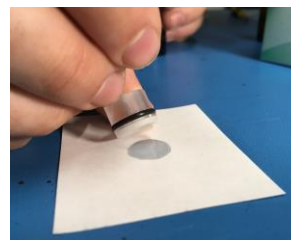
Step 2.1 Twist off Impactor cap and remove impactor plate assembly from the holder.



Step 2.2. Use a fiber-free cloth (Kimwipes) soaked in alcohol to remove any visible dust on the white porous surface.



Step 2.3 Use the Impactor Oil Applicator to apply one drop of oil to a fiber-free paper pad.



Step 2.4 Replenish the Impactor Plate's oil by pressing it on the oiled paper.



Step 2.5 Place impactor plate back in the holder ensuring white surface is oiled and aligned away from the DustCount.

HOW TO INSTALL OR REPLACE FILTER(S)



Step 3.1: Loosen filter cartridge cover screws with a small Philips screwdriver



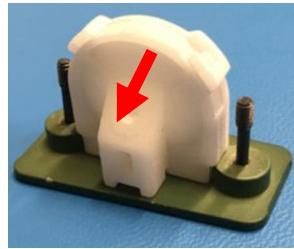
Step 3.2: Extended filter cover screws



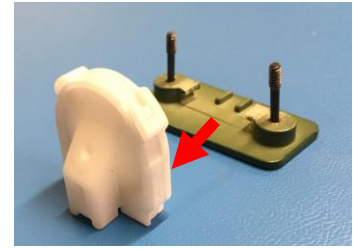
Step 3.3: Extract filter cartridge



Step 3.4: Filter cartridge and cover fully extracted from the DustCount



Step 3.5: Slide filter cartridge off filter cartridge cover



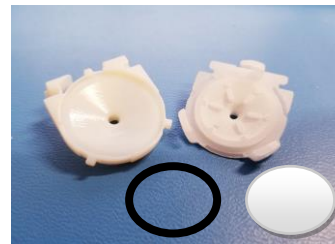
Filter cartridge off filter cartridge cover



Step 3.6: Twist the filter cartridge halves to unlock



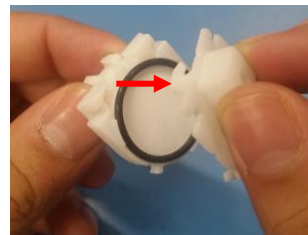
Step 3.7: Separate filter cartridge halves exposing O-ring and filter(s)



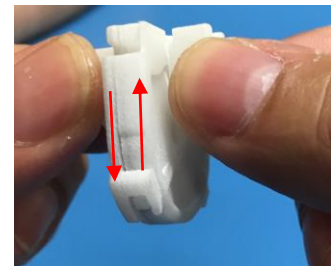
Step 3.8: Remove O-ring, protection filter, and sampling filter if installed.



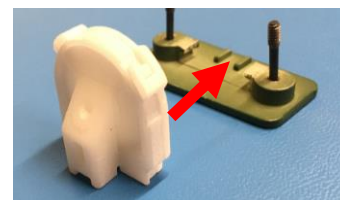
Step 3.9: Place sampling filter (1) (if performing gravimetric analysis), followed by a clean protection filter (2), followed by the O-ring (3) in the smooth cavity of the filter cartridge. The filters and O-ring must be placed in this order in the smooth cavity.



Step 3.10: Re-assemble filter by fitting the two halves together.



Step 3.11: When mounting tabs aligned, twist to lock the two halves together. The filter cartridge is now ready to be re-attached to the filter cartridge cover



Step 3.12: Slide filter cartridge onto the filter cartridge cover, insert back into DustCount and tighten screws.